



Ambassador - Ambition - Irish Mini-Break

5 Night Cruise & Stay

Depart Portsmouth aboard Ambassador Cruise Line's Ambition and enjoy a relaxed voyage to Ireland, blending scenic sailing with time ashore. Discover the charm of Dublin before continuing to Belfast, where a two-night stay gives you the chance to explore the city's maritime heritage, historic streets and vibrant cultural scene at a comfortable pace.

Highlights:

- Take time to discover Portsmouth's naval past, including the opportunity to explore the iconic HMS Victory if you wish.
- When you're ready to relax, enjoy free time to explore the city's welcoming pubs and waterfront areas at your own pace in Portsmouth.
- Unwind aboard Ambassador Cruise Line's Ambition, relaxing in their spa, sitting in the café or taking time to relax by one of their pools.
- From Dublin's lively streets to Dún Laoghaire's harbour, enjoy maritime history, museums, and fresh seafood.
- Enjoy a two-night stay in Belfast at leisure, with time to explore the city at your own pace.

What's included:

- Getting home: Return flight to Manchester from Belfast.
- Transfers: Private transfers between airports, hotels, and ports as detailed.
- Accommodation: 5 nights in total;– including 3 nights aboard Ambassador Cruise Line's Ambition, 2 nights at Leonardo Hotel Belfast, Belfast.
- Meals: Full board on the Ambition, room only in Belfast.

Not included:

- Pre-paid gratuities.
- Drinks (Drinks packages can be added from £120 per person.
- Meals (other than those mentioned in the itinerary), tips, and personal expenses.
- Optional excursions and tours throughout itinerary unless otherwise stated.
- Anything not specifically mentioned under the "What's Included" section.
- Travel to Portsmouth.

Full Itinerary

Day 1: Embark Ambassador's Ambition

Make your own way to Portsmouth at leisure. Enjoy your own time in Portsmouth, taking time to stroll along the historic waterfront or explore the city's charming streets at your own pace. Later, make your way to the ship for embarkation, scheduled between 2 pm and 4 pm, and begin your relaxing cruise journey.



Day 2: Day At Sea

Sea days are the perfect chance to relax, unwind, and enjoy time with friends and family. Pamper yourself at the Green Sea Spa, savour the diverse onboard cuisine, or experience world-class entertainment in the Palladium and other venues. Whether attending a class or talk, joining in a game, or simply soaking up the views, there's something to delight everyone.



Day 3: Dun Laoghaire, For Dublin

Arrive to Dun Laoghaire at 07:00 Departs at 18:00.

Discover Ireland's maritime history and savour fresh seafood in the charming harbour town of Dun Laoghaire. Take time to explore local museums, stroll along the picturesque waterfront, or hop on a ferry for further Irish adventures. Alternatively, Dun Laoghaire is just a 40-minute transfer from Dublin, offering the option to explore all the city has to offer at your own pace.



Day 4: Disembark in Belfast

This morning, arrive in Belfast and disembark between 9am and 11am before heading to your hotel to settle in. Enjoy the rest of your day at leisure.

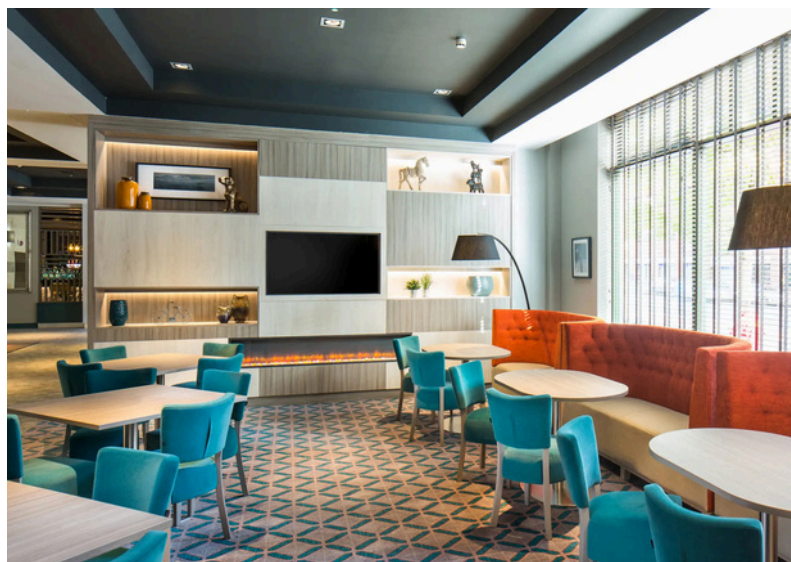
Accommodation: 4* - (or similar).



Day 5: Belfast

Belfast, the capital of Northern Ireland, blends rich history with a vibrant modern spirit. Explore the historic Titanic Quarter, wander through colourful neighbourhoods adorned with striking murals, and discover a city full of culture, heritage, and lively experiences at every turn.

Accommodation: 4* - Leonardo Hotel Belfast (or similar).



Day 6: Return to Manchester International.

Your flight arrives at Manchester airport, ready for you to make your journey home.



FAQs

HOW CAN I BOOK?

Simply book with our Sales Team 0800 254 0310.

ARE PRE-PAID GRATUITIES INCLUDED?

Gratuities are not included in your holiday cost and will be charged to your onboard account.

WHAT IS THE BOARD BASIS?

Cruise is full board, your hotel stay is room only in Belfast, breakfast is available at a supplement.

CAN I UPGRADE MY PACKAGE?

Yes, depending on availability. Please contact our Sales Team 0800 254 0310.

CAN I CHANGE THE HOLIDAY PACKAGE AND FLIGHTS TO ADD MORE DAYS OR DESTINATIONS ELSEWHERE?

Yes, we can help. Please contact our Sales Team 0800 254 0310.

WHAT TIME IS SHIP DEPARTURE?

Departure is 17:00.

WHAT TIME IS SHIP DISEMBARKATION?

Between 09:00 and 11:00.

WHERE IS THE PORT TERMINAL

Portsmouth: Portsmouth International Port, George Byng Way, Portsmouth, PO2 8SP.
Belfast: Belfast Cruise Terminal, 48 Airport Road West, Belfast, BT3 9EA.

WHAT TRANSFERS ARE INCLUDED?

Private transfers are from Belfast Port to the Belfast Hotel and from the Belfast hotel to Belfast airport.

WHAT IS THE DEPOSIT AMOUNT?

£59 Per person.